



Garfield Elementary School

325 Plymouth Street NW
Olympia, WA 98502
(360-596-6900)

<http://garfield.osd.wednet.edu>

Brendon Chertok
Principal

December 19, 2014

January Calendar of Events

January 5	8:40	School Resumes
January 6	5:00	Site Council Meeting
January 7	9:40	Late Start
January 9	6:30	PTA Movie Night – How to Train Your Dragon II
January 12	6:30	PTA Meeting
January 12		Vision and Hearing Screening
January 15	12:45	Lifeskills/MLK Assembly
January 19		No School
January 21	9:40	Late Start

Garfield Wish List

Linda Zaccagnini:	MORE Class Instructors
School:	Tennis balls - used or new
Garfield Track Stars:	Volunteers - mornings - 10:10-10:35
All Classrooms:	PTA room reps
Playground:	Large spoons (for digging in sandboxes)



Teacher Michell with her first grade reading group take a break from their work to smile for the camera.

Student Learning Behavior Targets in Garfield Classrooms – Section 4 - Common Expectations and Language

1. BE AN ACTIVE LISTENER

What student looks like –

- a) voice off
- b) hands empty
- c) eyes on speaker
- d) attentive body language

How adults support –

- a) wait for compliance before beginning presentation
- b) teach, model and practice
- c) use natural consequences to reinforce

Arrival/Dismissal Information for Special Days

Half Days

Dismissal 11:45

March 13

March 24, 25, 26, 27 – Conference Week

One Hour Late Start Days for Improving Teaching and Learning

9:40 Start

January 7, January 21, February 4, February 25, March 4, April 1, May 6, and June 3

No School Days

January 19 - Martin Luther King, Jr. Day

February 16 and 17 - Presidents Day/Mid-Winter Break

April 6- 10 - Spring Break

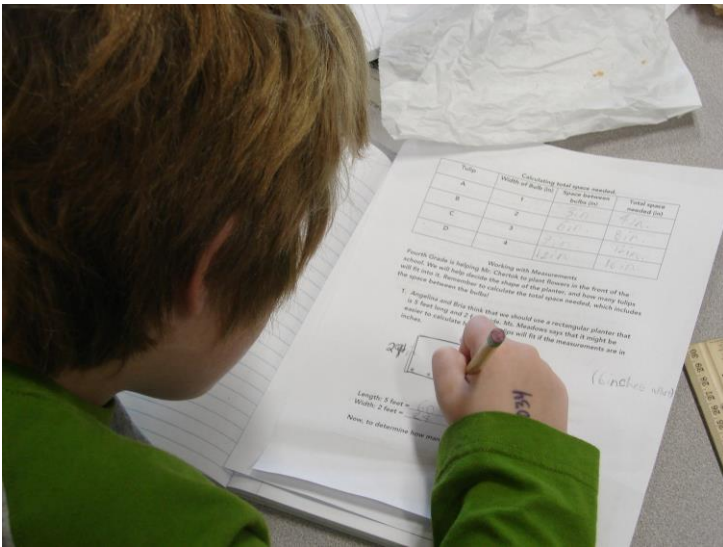
May 25 - Memorial Day

Last Day

June 12 (unless makeup days are needed)

11:45 Dismissal

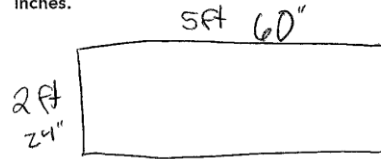
Fourth Graders Use Math to Solve Planting Problem



Fourth graders in Ms. Meadow's and Mr. Finney's class work through a math problem about planting tulips in our new garden beds. These multi-step, complex problems are the kinds of problems students will see in the new "Smarter Balanced Assessment" this spring. All 3rd, 4th and 5th grade students, in the areas of math and reading, will participate in this new state assessment aligned with new Common Core State Standards. Building confidence and skills to perform these tasks are a focus for all of our teachers this year. Congratulations to our fourth graders who, in the words of Ms. Meadows, "persevere" as they apply this new learning.



1. Angelina and Bria think that we should use a rectangular planter that is 5 feet long and 2 feet wide. Ms. Meadows says that it might be easier to calculate how many tulips will fit if the measurements are in inches.



Length: 5 feet = $\frac{60}{1}$ inches
 Width: 2 feet = $\frac{24}{1}$ inches

Now, to determine how many tulips will fit!

So.....Which size planter should we use?

Figuring out Digging Depth

We will need to dig a hole to a depth of at least twice the length of the tulip bulbs to plant them. Michael and Jakob measure the length of the bulbs. We have some that are $1\frac{1}{2}$ inches long, and we have some that are $2\frac{1}{2}$ inches long. Some kids are saying that we should dig all the holes 3 inches deep, but others are saying we can't. What do you think? Draw a model to demonstrate your thinking. Be precise! Use your ruler.

I think that the holes shouldn't be 3's big because different size bulbs need bigger spaces than 3's.

